



THE NORTH END

REGIONAL REVIEW

EMAIL: DEB@THEBOSTONSUN.COM
EDITOR@REVEREJOURNAL.COM

WWW.NORTHEENDREGIONALREVIEW.COM



PHOTO BY REBECCA TELLALIAN CAHALY

ARMENIAN HERITAGE PARK HOSTS COLLEGE STUDENTS

Friends of Armenian Heritage Park on The Greenway recently held a successful "Let's Meet at the Park" event for several colleges. Both undergraduates and graduates from different colleges participated in special events that presented them with a firsthand look and education of the park and all it offers. Each student received a bag of Fastachi mixed nuts. ~ Phil Orlandella

Boston area offers wide range of school offerings for kids of all ages

By Regional Review staff

A new academic year is just getting underway, but it's already time for parents and guardians to start thinking about options for next year, and with the Boston area's wide range of top-notch independent, private, and parochial schools, kids of all ages can find one that well suits them while still staying local.

For small children just starting

off on their educational journeys, the Beacon Hill Nursery School at 74 Joy St. has been a vital part of the downtown community since 1955.

With a commitment to high-quality education since its inception, the mission of BHNS is to create a nurturing community that instills a lifelong love of learning, and its exceptional educators value play as purposeful and cherish children's innate curiosity.

The warm and welcoming environment of BHNS includes two on-site playscapes, a dedicated library, seven classrooms, and an indoor gym. Its curriculum has a strong emphasis on play; hands-on engagement; open-ended exploration; and social-emotional development. Enriched by weekly yoga and music classes, the program also nurtures and engages children

(SCHOOLS Pg. 7)

Nazzaro Center landmark designation moves forward

By Phil Orlandella

Continued efforts by the North End Historical Society (NEHS) to declare the Nazzaro Center building a landmark took a giant step forward when the City of Boston Landmark Commission recently gave it their blessing.

Reportedly, the next step for designation approval is Mayor Michelle Wu signing off on it. Word has it that she has committed to approving the landmark request.

Recently, Rep. Aaron Michlewitz secured \$5 million in state funds to renovate the build-

ing, conditionally, only if used for community non-profit use.

The two local non-profits have clearly indicated they were interested in providing community services in the facility.

Both the North End Music and Performing Arts Center (NEMPAC) and NEW Health have made their intentions public.

Eventually, when renovations have been completed, the Boston Center for Youth could be moved to a new community center, adjacent to the Mirabella Pool on Commercial Street, made possible by Rep. Aaron Michlewitz once again securing state funds to the tune of \$20 million dollars.

Dumpster on Salem/Hull Streets poses problem

By Phil Orlandella

A dumpster place that 176-176A Salem Street and Hull Street Court, just a few yards from the Old North Church, on the Freedom Trail, has created a rodent problem and other issues according to a resident that abuts the building being gutted.

Besides the alleged rodent problem, other concerns have been raised including:

- Dropping material from the

building without a shout.

- The dumpster doesn't have a cover.
- Workers, residents and people passing by our tossing food and their trash in the dumpster.
- Worried if hazmat or lead material has been put in the dumpster.
- Dust and debris on the street, sidewalk and private property.

The resident told the Review she called 311, but they didn't understand her and told her to call 911.



PHOTO BY ANTHONY PEPICELLI

Dumpster shown with no cover and no chute is visible for removing material during the gutting of the building.

EDITORIAL

GET YOUR COVID-19 BOOSTER SHOTS

While we would all love to leave COVID-19 in the rearview mirror, the stark reality is that the virus is still circulating among us, with the elderly and persons with compromised immune systems the most vulnerable to becoming seriously ill and dying from the virus.

Even otherwise healthy individuals, especially if they are overweight, run the risk of becoming seriously ill from the disease in the short-term and potentially suffering the lingering and debilitating effects of long-COVID, which has been well-documented, though it remains poorly understood.

Fortunately however, the CDC has approved the updated COVID booster vaccine that has been proven to be an effective and safe preventative measure against both catching the disease in the first place and, if infected, mitigating its most harmful effects.

The reasons we need an updated booster are three-fold: First, the effectiveness of the vaccine diminishes over time. Thus, the shots we received last year are significantly less protective today than they were 12 months ago. Second, the virus has mutated in the past year and the updated vaccines will provide protection against this ever-changing virus. Third, as we enter the fall and winter months, families will be gathering, with many having traveled in airplanes and returning from school, which are breeding grounds for the virus, and therefore looming as potential threats for parents and grandparents. We would note that from January to July of this year, 88 percent of deaths from COVID-19 were among people who were 65 years or older.

We urge all of our readers, regardless of age, to get the latest COVID-19 booster as soon as possible, both for our own health and that of our friends, co-workers, and family members.

MITT COULD HAVE BEEN A GREAT PRESIDENT

The announcement this week by Utah Senator Mitt Romney that he will not seek re-election in 2024 leaves a void not only in the Republican party, but on our national political scene.

When Mitt Romney was our governor, he showed that a person of integrity and dedication to office can get things done for the benefit of all citizens. His willingness to work with the Democrats to pass the landmark health care bill that guarantees health insurance for all Massachusetts residents served as a model for the historic Obamacare legislation a few years later at the national level.

In addition, Romney did not play politics (in contrast to governors both before and after)

with his government and judicial appointments. Mitt Romney was a straight shooter who held to the simple belief that excellence in government is attainable.

Unfortunately, Romney sold his proverbial soul to the devil when he entered national politics, changing his previously-held views on a woman's right to choose and even disavowing his own creation, dubbed Romneycare, despite its success in Massachusetts, in order to cater to the archconservatives of the modern Republican party.

However, after his unsuccessful run for president in 2012 in which he was defeated by Barack Obama, Mitt Romney became the de facto leader of the opposition to the ultra-Republicans whose modus operandi can only be described as anarchy.

"A very large portion of my party," said Romney, "really doesn't believe in the Constitution."

Even though we disagree with Mitt Romney on just about every issue, we nonetheless believe that he is one of the few politicians who would have made a great President. His departure from the U.S. Senate will leave a void that few, if any, will dare to fill.

LETTERS TO THE EDITOR

NEW HEALTH'S NORTH END SITE IS OPEN

Dear North End Patients and Community Members,

We know you've seen the scaffolding outside our building since the summer – but we want to ensure you that NEW Health's North End site is open and operating during renovations. All services are still being provided; select services are temporarily moved to our Charlestown location.

The City of Boston Inspectional Services Department and the George Robert White Fund, that manages the building, have confirmed that the building is structurally sound and safe for occupancy.

As promised, we will continue to keep the community updated along the way. The new roof installation process that began in August is taking longer than anticipated and will now wrap up in the coming months. The rest of the health center remains open; however, our dental and vision departments will continue to be provided at our Charlestown site at 15 Tufts Street. Our podiatry services remain in the North End but have been moved to the first floor. Dental, vision and podiatry services are not being discontinued.

Patients who have scheduled appointments in dental, vision and podiatry during this project will receive updates via Patient

Gateway or phone. If you need an appointment in any of our departments or have questions about your care, do not hesitate to call the health center at 617-643-8000.

While prioritizing the safety and well-being of our patients and community members, we remain committed to providing high quality care and are working diligently to minimize the impact to our patients during this renovation. For more information, please visit newhealthcenter.org.

Thank you for your continued patience and cooperation during this process.

Vin Scibelli, CEO
Chief Executive Officer
NEW Health

GUEST OP-ED

My thoughts on Boston Public School meals

By Mayor Michelle Wu

I'll never forget that moment of wondrous epiphany years ago, when, still new to Boston, I tried my first apple picked from the tree at a local orchard. The pucker of tangy sweetness and juicy crispness flooded my senses with delight, then shock. How could I have lived for so many years thinking those other apples were as good as it gets?

The apples of my childhood were textbook Red Delicious picked from big piles at the grocery store and coated in that waxy film that didn't quite wash off—slightly squishy, slightly sweet, consistently deep red and bland.

When I was pregnant for the first time, poor dad-to-be drove through torrential rains to the orchard to satisfy my craving for farm-fresh apples. In the years after, it's become a treasured family tradition to visit the orchard and load up for the fall.

This year, apple-picking season and back-to-school are directly connected: for the first time, all apples served in Boston Public Schools lunches will be fresh and locally grown.

For many of our students, school meals are providing up to half of their daily calories. Guaranteeing universal free school meals ensures a reliable source of nutrition, destigmatizes free lunch, and saves families cost and stress. We've also made strides

in ensuring culturally appropriate foods, including kosher and halal options, and a range of options that reflects the rich cultural diversity of our school communities.

But focusing on food justice means taking it beyond affordable and accessible. Good food should be nutritious, delicious, local, and sustainable too. As a City Councilor, I worked with a big coalition to draft and pass Boston's Good Food Purchasing Ordinance, which requires any City spending on food to prioritize nutrition, local production, fair labor, animal welfare, environmental sustainability, and equitable purchasing. Now

fully implemented and integrated with Boston Public Schools food purchasing contracts, Good Food Purchasing is delivering real impact this school year.

This year's BPS menus will include more than 20 local products grown in New England, representing more than 10% of our food budget as we move quickly to reach our goal of 30% local spend.

For these meals, all 353,875 pounds of apples served in BPS schools will be New England grown, from eight different farms or farm collectives. More than half of the 1,320,000 whole apples

(OP-ED Pg. 3)

REGIONAL REVIEW

- FOUNDED IN 1967 -

PUBLISHER: Debra DiGregorio - deb@thebostonsun.com

REPORTERS AND CONTRIBUTORS:

Stephen Quigley and Cary Shuman

PHONE 781-485-0588

INDEPENDENT NEWSPAPER GROUP, LLC

PRESIDENT: Stephen Quigley

Police respond three times to construction sites

By Phil Orlandella

After Boston Police responded to two reported security breaches, at the Horace Dodd House LLC development site at 190-190A Salem Street and 4 Snelling Place, residents were assured that property had been secured by general contractor Anthony Bellarti, a former City of Boston Inspectional Services Department (ISD) Inspector.

However, just a few days later, police responded to an additional 911 call at the same site, easily gaining access through a mesh barrier leading to the property.

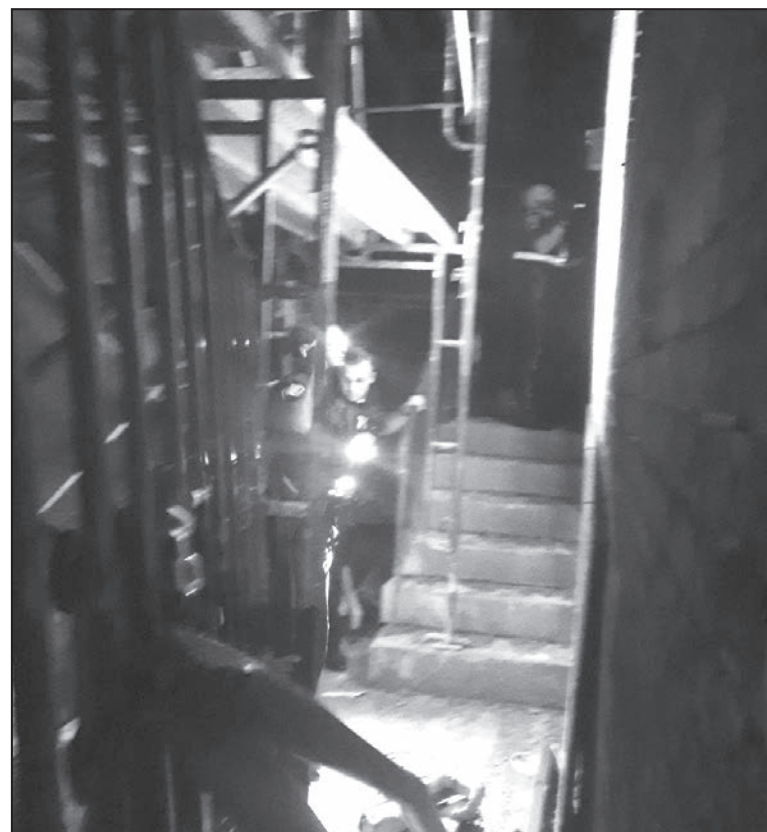
Residents told the Review that the area, as of this article, has not been properly secured.

The first incident involved a man arrested naked in a home adjacent to the construction site, where it is believed he gained access.

The second incident occurred when a large group of teenagers apparently breached security and had to be removed from the project site.



Resident shows how easy it is to gain access to construction site.



PHOTOS BY ANTHONY PEPICELLI

Police officer shown in construction site after easily gaining access

ect site.

Police responded a third time, when a resident called 911 again

claiming they saw teenagers going in and out of the site.

They claim the area is being

used as a toilet or for drug use.

While police didn't find anyone on the property, they did assess

the property as easily as residents claimed they would.

OP-ED (from pg. 2)

in school meals will come from Pine Hill Orchards in Colrain, Massachusetts, with the rest grown from JP Sullivan growers collective, Mountain Orchard, and Blue Hills Orchard. And another 1,875 pounds of sliced apples will come from Plain View Farm, Farm Fresh, Three River Farmers Alliance, and Lyman Orchards.

Buying local means flexing our spending power to reshape food supply chains and strengthen

farmers following healthy growing practices right in our region. Cutting down the shipping distance by buying local also attacks emissions from one of the most harmful industries for climate change.

Right now, 86 of our 125 BPS schools are cooking healthy and fresh meals from scratch, compared to just 30 schools cooking last year. By November, that number will be up to 108 schools as

we ramp up staffing. The other schools that don't yet have kitchens are served by our wonderful local food partner, a Black-owned, employee cooperative business based right in Roxbury, City Fresh Foods, who also provide the after-school snacks and other food options at some of the

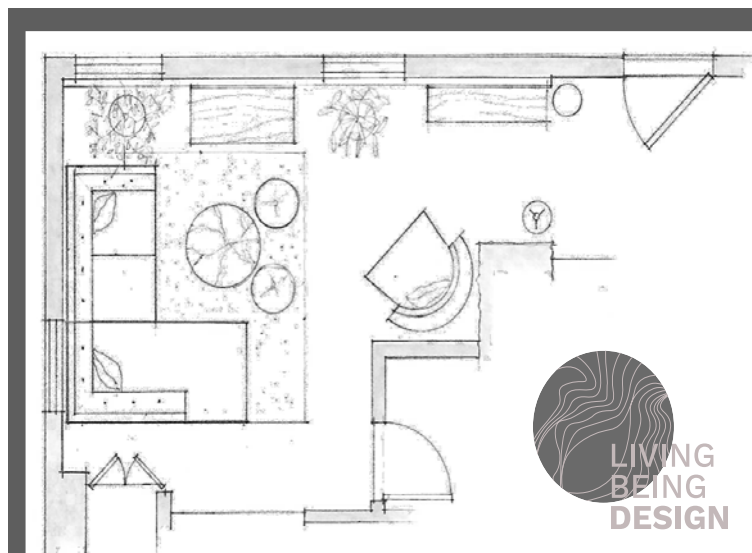
scratch-cooking schools as well.

By keeping all our dollars as local as possible, we're prioritizing nutrition, supporting our local economy, and building wealth directly in our communities.

Our office of food justice has an ambitious agenda to expand access, opportunity, and connec-

tion through food. We'll keep growing these efforts throughout Boston, from neighborhood farmers markets and restaurants, to BPS schools and the local farms in our good food purchasing ecosystem.

Michelle Wu is the Mayor of Boston.



INTERIOR DESIGN:
from layout to finish

Christine Cavataio, CCF, LEED AP, NCIDQ Certified
617-510-8659
LivingBeingDesign.com

CITY OF BOSTON MERCURY RECOVERY PROGRAM

Thermometers

Mercury Switches

Thermostats

Fluorescent Lamps

Elemental Mercury

Blood Pressure Units

PLEASE BRING THESE PRODUCTS CONTAINING MERCURY TO:

HOUSEHOLD HAZARDOUS WASTE DROP OFF

SATURDAY, SEPTEMBER 23, 2023
8:30 a.m. - 12 p.m.

Central DPW Facility
400 Frontage Road, Boston

Boston Residents Only - Proof of Residency Required.
Find a full list of acceptable items at:
Boston.gov/hazardous-waste

AD SPONSORED BY



IN BRIEF By Phil Orlandella**GERALDINE MARSHALL NEMPAC SCHOLARSHIPS TO BE ANNOUNCED**

Six full scholarships, (in memory of Geraldine Marshall) will be presented this October to North End students to select and participate in a musical education or arts entertainment program, provided by the North End Music and Performing Arts Center (NEMPAC) for 2023-24.

State Rep. Aaron Michlewitz, each year, along with many volunteers and the business community holds a Cornhole Classic at the North End Park on The Greenway to support the scholarships in memory of his mother.

This year, the Classic raised \$62,000 as many residents and others participated in the annual event, or enjoying a fun filled day for a worthy cause.

Each year, NEMPAC uses 25-30 percent of its annual program revenue back to people in need, through its revised tuition assistance program.

CORNER CAFÉ CAPTURES 19TH SOFTBALL CHAMPIONSHIP

Since the North End Softball League came to be many-many moons ago, no team has won more championships (19) than the Corner Café has managed to accomplish.

The North End business owned and operated by Richie Longo said he has so many trophies he "can open a trophy store".

Besides sponsoring a softball team, Richie also funds many neighborhood events for all ages and donates to many community fundraisers.

THREE GUEST SPEAKERS

Besides the usual committee report, three guest speakers were featured at the North End/Waterfront Residents' Association (NEWRA) September monthly meeting held at the Nazzaro Center on North Bennet Street.

Boston Police Community Officer Frank Champa, Boston

Planning and Development Agency community engagement manager Jason Ruggiero and Rep. Aaron Michlewitz.

POLICE PUBLIC SAFETY MEETING

The first Thursday of every month, Boston Police Community Officer Frank Ciampa conducts community public safety meetings at 6:30 PM in the Nazzaro Community Center North Bennet Street,

Officer Ciampa presents monthly District 1A safety issues and will address community concerns.

FOCCP FALL FESTIVAL

Friends of Christopher Columbus Park (FOCCP) have already made plans for their annual Fall Festival that will be held on October 14 from 12 noon to 3 PM.

The fun filled community Festival will include pumpkins, arts and crafts, entertainment and many kids dressed up for Halloween.

The popular Festival is open and free to the public.

FOR KIDS AT THE LIBRARY

The North End Library on Parmenter Street has put together several fun and educational programs during the week for kids.

Mondays at 10 AM Storytime for ages 3 and 4.

Mondays at 3 PM Chess introduction.

Thursdays at 3 PM Crafternoon.

BUONA SERA SOCIAL

ABCD North End/West End Neighborhood Service Center (NSC) will conduct its biggest fundraiser, the 11th annual Buona Sera an evening with friends on Thursday, October 12.

The event features a wine reception, a fantastic evening with friends and a celebrity guest of your choice at one of the North End restaurants participating in the fundraiser.

It all starts with a wine reception from 5:30 PM to 7 PM at Wilmer Hale, 60 State Street with dinner following at many North End restaurants and nine guests'

celebrities.

To purchase a table for ten, make a donation or to learn more, go to www.bostonabcd.org/buonasera.

HARBOR TOWERS SCARECROW VILLAGE

It appears that for the last time, residents of a Scarecrow Village will return to the Harbor Towers lawn area.

The village will arrive on Friday, October 13 and will remain in place until November 3 or fourth.

NEW HEALTH OPEN WHILE RENOVATING

NEW Health on Hanover Street, while being renovated, and even with a scaffolding outside the building, is still open and operating.

All services as still being provided in the North End and Charlestown.

Selected services, dental and vision, are temporarily moved to Charlestown.

NEW Health will continue to keep the community updated.

Podiatry services have been moved to the first floor in the North End.

Patients with questions should call the Center at 617-643-8000.

SCARECROW VILLAGE AT TOWERS

It appear, for the last time, residents of Scarecrow Village will return to the Harbor Towers lawn area.

The site, can be seen by walking along the Harbor Walk just north of the Boston Harbor Hotel and Rowes Wharf.

They can be visited anytime day or night and will add some fun to the Halloween spirit in October, according to Harbor Towers current Chair Pat Gowdy. "Come by with your cameras and enjoyed the scene."

Staff will be on duty and a family of pink Flamingos will be located on the site.

The villages will arrive on Friday, October 13 and will remain in place until November 3 or 4,

STAR MARKET COOLS OFF SENIORS

Star Market on the Hub on Causeway Street, on a very hot summer day, provided seniors at the North End/West End Neighborhood Service Center (NSC) with three types of ice cream, allowing them to cool-off.

There were plenty of scoops of ice cream, even seconds, served with whipped topping, caramel sauce, had chocolate shell, nuts and cherries.

NSC HOSTED NEW HEALTH WORKSHOPS

A series of community needs workshops conducted by NEW Health and hosted by the North End Neighborhood Service Center (NSC) was a valuable success for everyone that participated.

Seniors were asked about what health issues they feel are big problems in the community, what the definition of health means to them, what they would like to see in the community to improve overall health and more.

Participants received a super-market gift card for their time and feedback.

NSC WELCOMES NEW MEMBER

Adam Balsam was introduced by the North End West End Neighborhood Council as the group's newest member at their September public meeting held at the Nazzaro Community Center on North Bennet Street.

NSC also encouraged all community members to participate in the direction of the Council going forward in the present and future agenda that includes:

- Trash issues.
- Climate change.
- Discarded needles in parks.
- Outdoor street dining.
- Counsel change of venue.

FREE FITNESS CLASSES

The Nazzaro Community Center on North Bennet Street is currently offering fitness classes on Fridays from 10:30 AM to 11:30 AM for everyone 55 or older.

The classes focus on movement, exercise, stretching and breathing techniques taught by Nancy Bellantoni.

NORTH END FOOT CENTER

MEDICAL & SURGICAL TREATMENT OF THE FOOT

Board Certified with the American Board of Podiatric Orthopedic & Primary Podiatric Medicine

Member of the American Podiatric Medical Association

Most Insurance Plans Accepted

DR. FRANK S. CAMPO, D.P.M., F.A.C.F.O.

260 NORTH STREET - BOSTON, MA - Ph: 617-248-8682

TO PLACE YOUR AD CALL 781-485-0588

Officials raise risk for EEE to high in three more communities

The Massachusetts Department of Public Health (DPH) last week announced that Eastern equine encephalitis (EEE) has been detected in an additional mosquito sample collected on September 13 in Brimfield. This finding raises the EEE risk level to high in Brimfield, Sturbridge, and Holland and to moderate in Wales.

This is in addition to the six communities already at high risk for EEE: Douglas, Dudley, Oxford, Southbridge, Sutton, and Webster. Auburn, Charlton, Grafton, Millbury, Northbridge, and Uxbridge are at moderate risk.

“The forecast is for cooler temperatures which will start to reduce mosquito activity,” said Dr. Catherine M. Brown, State Epidemiologist. “However, the risk for spread of EEE virus from mosquitoes to people is still present. Everyone in these moderate- and high-risk areas should take the recommended steps to prevent mosquito bites; this includes avoiding outdoor

activity between dusk and dawn in the high-risk communities.”

EEE is a rare but serious and potentially fatal disease that can affect people of all ages. EEE is generally spread to humans through the bite of an infected mosquito. There were 12 human cases of EEE in Massachusetts in 2019 with six deaths and 5 human cases with one death in 2020. There were no human cases of EEE in Massachusetts in 2021 or 2022. No human or animal case of EEE has been detected in Massachusetts so far this year.

People have an important role to play in protecting themselves and their loved ones from illnesses caused by mosquitoes.

Avoid Mosquito Bites

Apply Insect Repellent when Outdoors. Use a repellent with an EPA-registered ingredient (DEET (N,N-diethyl-m-toluamide), permethrin, picaridin (KBR 3023), oil of lemon eucalyptus [p-Menthane-3,8-diol (PMD)] or

IR3535) according to the instructions on the product label. DEET products should not be used on infants under two months of age and should be used in concentrations of 30 percent or less on older children. Oil of lemon eucalyptus should not be used on children under three years of age.

Be Aware of Peak Mosquito Hours. The hours from dusk to dawn are peak biting times for many mosquitoes. Consider rescheduling outdoor activities that occur during evening or early morning in areas of high risk.

Clothing Can Help Reduce Mosquito Bites. Wearing long-sleeves, long pants, and socks when outdoors will help keep mosquitoes away from your skin.

Mosquito-Proof Your Home

Drain Standing Water. Mosquitoes lay their eggs in standing

water. Limit the number of places around your home for mosquitoes to breed by draining or discarding items that hold water. Check rain gutters and drains. Empty unused flowerpots and wading pools and change the water in birdbaths frequently.

Install or Repair Screens. Keep mosquitoes outside by having tightly fitting screens on all windows and doors.

Protect Your Animals

Animal owners should reduce potential mosquito breeding sites on their property by eliminating standing water from containers such as buckets, tires, and wading pools – especially after heavy rains. Water troughs provide excellent mosquito breeding habitats and should be flushed out at least once a week during the summer months to reduce mosquitoes

near paddock areas. Horse owners should keep horses in indoor stalls at night to reduce their risk of exposure to mosquitoes. Owners should also speak with their veterinarian about mosquito repellents approved for use in animals and vaccinations to prevent WNV and EEE. If an animal is suspected of having WNV or EEE, owners are required to report to the Department of Agricultural Resources, Division of Animal Health by calling 617-626-1795, and to the Department of Public Health by calling 617-983-6800.

More information, including all WNV and EEE positive results, can be found on the Arbovirus Surveillance Information web page at Mosquito-borne Diseases | Mass.gov, which is updated daily, or by calling the DPH Division of Epidemiology at 617-983-6800.

Public health warning issued on recent sewage discharge

The following is a public health warning related to a recent sewage discharge, also known as a combined sewer overflow (CSO). State regulations require local public health departments to provide notice to the public when these discharges may create a risk to public health, including when a discharge lasts for more than two hours.

Massachusetts Water Resources Authority Outflow MWR203, located at Prison Point in Charlestown near the Charles River Dam, experienced a discharge or overflow starting on Monday, September 18, at 2:45pm, creating a potential public health risk. The overflow ended Monday, September 18, at 11:08pm, and this advisory expired 48 hours after the overflow has ended. Note that this data is preliminary and may be revised. Check the Massachu-

setts Water Resources Authority website and the Boston Water and Sewer Commission for current updates. This event impacts the waters of the Upper Inner Harbor and Charlestown.

Boston Water and Sewer Commission Outflow BOS070, located in the Fort Point Channel, experienced a discharge or overflow starting on Monday, September 18th at 8:15pm, creating a potential public health risk. The overflow ended Monday, September 18th at 10:30pm, and this advisory will expire 48 hours after the overflow has ended. Note that this data is preliminary and may be revised. Check the Massachusetts Water Resources Authority website and the Boston Water and Sewer Commission for current updates. This event impacts the waters of the Upper Inner Harbor

and Charlestown.

The public is advised to avoid contact with affected water bodies for at least 48 hours after a sewage discharge or overflow, during rainstorms, and for 48 hours after rainstorms end, due to increased health risks from bacteria or other pollutants associated with urban stormwater runoff and discharges of untreated or partially treated wastewater.

A combined sewer overflow occurs when a large storm overwhelms the combined sewerage system causing rainwater to mix with wastewater and discharge to a nearby water body. This prevents sewage backups into homes and businesses.

More information about CSOs and public health is available at www.boston.gov/cso.

NEWS BRIEFS

DAYTIME BRIDGE MACHINERY INSTALLATION AT CHELSEA STREET BRIDGE

The Massachusetts Department of Transportation (MassDOT) is announcing that it will be conducting work to install span guide roller machineries on the Chelsea Street Bridge in East Boston and Chelsea. This work is scheduled to take place Monday through Friday, during the hours of 9:00 a.m. to 3:00 p.m. This work is schedule to begin on Monday, September 25 and will conclude on Friday,

November 17. There will be no weekend closures during scheduled Summer Tunnel closures. The work will require off peak temporary lane and sidewalk closures. The bridge will remain fully operational during the installation of the new machinery and pedestrian access across the bridge will be maintained at all times. The schedule for this work is weather dependent and is subject to change without notice.

Drivers who are traveling through the area should reduce speed and use caution.

Appropriate signage, law enforcement details, and advanced message boards will be in place to

guide drivers through the work area.

For more information on traffic conditions, travelers are encouraged to:

- Download the Mass511 mobile app or visit www.mass511.com to view live cameras, travel times, real-time traffic conditions, and project information before setting out on the road. Users can subscribe to receive text and email alerts for traffic conditions.

- Dial 511 and select a route to hear real-time conditions.

- Follow @MassDOT on X, (formerly known as Twitter), to receive regular updates on road and traffic conditions.

STICK TO IT!
Share your message in our paper with a **STICKY NOTE**

OPEN HOUSE? STICK IT!
FUNDRAISER? STICK IT!
NEED-TO-KNOW INFO? STICK IT!

Keep your name in the eyes of our thousands of readers!

Sticky size: 3 in. x3 in.
Shown sized to scale above covers approx. 2 columns
Copy for a Sticky due **3 weeks prior to run date**

Four Options to Choose From

7,000 COPIES 2-COLOR \$600	7,000 COPIES 4-COLOR \$700	12,000 COPIES 2-COLOR \$800
12,000 COPIES 4-COLOR \$900	4-COLOR STICKIES CAN BE A COMBINATION OF COLORS. 2-COLOR STICKIES CAN BE MADE WITH ANY 2 COLORS	

Call or Email Your Rep Today!
DEB@THEBOSTONSUN.COM
781-485-0588



Area groups form Plastic Free Mass

Over a dozen community and environmental groups have joined forces to form Plastic Free Mass, a new coalition dedicated to ending the use of polluting plastic. The group will push for new policies to protect our Commonwealth's residents and natural resources by ending our plastic addiction and moving us toward a cleaner future.

The data couldn't be clearer. Nearly 40% of the plastic produced annually is for single-use plastics and packaging. Very little plastic – between 5-6% in the United States – is actually recycled. Plastic is toxic and polluting at every stage of its lifecycle – from extraction and manufacturing, to use, recycling, and disposal. Many single-use plastics can be easily reduced, redesigned for reuse, or replaced with nontoxic alternatives.

"The Friends of the Malden River have sponsored many cleanups around and in the Malden River. The Malden River, a typical urban river, is inundated with plastic pollution due to its physical connection with the city's stormwater

system. Volunteers have removed thousands of single use plastic items and pounds of degraded polystyrene from the waterway. It is distressing. We have witnessed the contamination of the collected recycling at our local single stream recycling system. Typically, over 65% of Malden's collected recyclables are contaminated with plastic bags, household waste, and nonrecyclable plastics and metals. This contaminated recycling is incinerated at the Wheelabrator Saugus Plant. The Plastic Blight needs to end with state legislation and public awareness," said Karen Buck, Friends of Malden River.

Accordingly, we support legislation, policies, and programs that phase out and avoid the production and use of any unnecessary single-use plastics, reduce and eliminate plastic packaging whenever possible, and modernize our state's beverage container deposit system to include reuse and refill targets.

The members of Plastic Free Mass include Berkshire Environmental Action Team, Berkshire

Zero Waste Initiative, Beyond Plastics, Clean Water Action, Conservation Law Foundation, Container Recycling Institute, Environmental League of Massachusetts, Friends of the Malden River, Just Zero, Metropolitan Area Planning Council, MetroWest Climate Solutions, Mothers Out Front, Oceana, Progressive Democrats of Massachusetts, Seaside Sustainability, Slingshot, and Story of Stuff.

"The Commonwealth of Massachusetts is an environmental leader in so many ways, so it's particularly disappointing to see us fall behind in the area of solid waste. For example, our state is one of the only states in New England without a statewide plastic bag ban, and our bottle bill has one of the lowest redemption rates in the country. We must move quickly and decisively to remedy these shortcomings or we risk falling even further behind in the fight to curb the climate crisis," said Kirstie Pecci, Executive Director, Just Zero

Mara Shulman, Senior Attorney, Conservation Law Founda-

Healey announces a plan to ban state agencies from purchasing single-use plastic bottles

In a New York Climate Week speech, Massachusetts Governor Maura Healey announced a plan to ban state agencies from buying single-use plastic bottles. Conservation Law Foundation (CLF) released the following statement in response.

"Single-use plastics are a scourge on our environment and our communities," said CLF zero waste attorney Mara Shulman. "These products hasten the climate crisis and endanger the health of people and wildlife. Governor Healey's ban is a great step towards making Massachusetts a leader in fighting the plastics crisis."

CLF and our partners in the Plastic Free Mass coalition and Zero Waste Caucus are pushing for the legislature to ban all sorts of single-use plastic, modernize the state's antiquated beverage container deposit system, and pass an extended producer responsibility for plastic packaging law.

tion added, "It's time to finally address the plastics crisis in Massachusetts. From modernizing our antiquated beverage container deposit system, to banning single-use plastic bags at checkout, to making producers of plastic packaging responsible for reduc-

ing packaging and managing plastic waste at its end of life, there are several pending bills that will take us in the right direction. We stand with our elected officials and pledge to keep up the momentum because there is no time to waste in taking a bite out of waste."

EMS celebrate new EMTs, promotions and cadet program

Special to the Regional Review

Mayor Michelle Wu, along with Boston Public Health Commission Executive Director Dr. Bisola Ojikutu and Boston Emergency Medical Services (EMS) Chief James Hooley, celebrated the graduation of 15 Emergency Medical Technician (EMT) Recruits and three promotions at a ceremony

at Faneuil Hall on Friday. With the completion of their training, the EMTs will enhance staffing for 9-1-1 ambulances and dispatch operations, strengthening the City of Boston's Emergency Medical Services.

During the ceremony, Mayor Wu announced a new cadet program at Boston EMS. Through the program, designed to bol-

ster employment at Boston EMS, cadets will be hired as full-time temporary employees. Cadets will earn as they learn; complete an EMT training course, obtain state certification, and support different areas of the department as they prepare for a career as an EMT at Boston EMS. After successful completion of the program, expected to be no more than six months, cadets will transition directly into the next EMT Recruit Academy earning \$69,372 annually.

"I want to thank all of you -- those who are graduating, those who are being promoted into leadership today, and everyone at Boston EMS for being the living embodiment of the best parts of our city," said Mayor Michelle Wu. "People who have the strength and heart to provide care and calm for others in their moments of greatest need. I'm proud to not only celebrate the futures of all of those who are stepping into this role, but also the future of the cadet program."

This ceremony formally acknowledges 15 recruits' successful completion of an intense training program for EMTs at Boston EMS. Hired as state-certified EMTs, these graduates completed an additional six months of classroom and field training to hone their skills. They were trained in a variety of life-threatening emer-

gency situations, including active shooter incidents, hazardous materials exposure, transportation accidents, recovery services, human trafficking, and mass casualty incidents. During their training rounds, they responded to more than 2,400 9-1-1 incidents caring for patients suffering from a range of emergencies including cardiac arrest, behavioral health, illnesses and injuries, and serious trauma including shootings and stabbings.

"I personally want to thank all the graduates and promoted members of EMS for their commitment to serving the residents of Boston with compassionate care that saves lives and furthers health equity," said Dr. Bisola Ojikutu, Commissioner of Public Health and Executive Director of the Boston Public Health Commission. "Their job isn't easy, but their hard work, dedication, and quality of care never wavers."

Recognized alongside the newest EMTs for their promotion to the rank of Captain, Patrick Calter, James McCabe and Michelle Chu represent more than 46 years of combined experience at Boston EMS. Serving as supervisors, mentors and advocates, the newest captains are dual-trained in field and dispatch operations.

"As much as we talk about the need for EMS, the demands on EMS, it couldn't be a more excit-

ing time to be in EMS. We are changing and evolving more than ever before," remarked Boston EMS Chief of Department, James Hooley. "These graduates have already accomplished so much. As they transition to the role of department EMT, they will now help guide and mentor future members, including upcoming recruits and cadets."

The Boston EMS Recruit Academy is a full-time paid training program for state-certified EMTs before they are assigned to ambulances, ensuring residents receive the highest quality pre-hospital care. The next recruit academy class, comprised of 35 recruits, will begin later this month. Boston EMS is currently accepting applications for the cadet program. Anyone interested in a rewarding career at Boston EMS is encouraged to go to www.boston.gov/ems to learn more and sign up for training and employment opportunities.

Boston EMS is one of the busiest municipal EMS providers in New England, responding to more than 134,000 emergency medical incidents per year. As a bureau of the Boston Public Health Commission (BPHC), Boston EMS is committed to serving Boston's residents through clinical excellence, emergency planning and preparedness, and community outreach.

You'd think at least one of them could tell you how to renew a passport.



Not everyone in the government knows everything about the government. So when you need official info about Social Security, getting a passport, renewing a driver's license, or if you're just checking your local weather, go to FirstGov.gov. A monumental source of useful information.

FIRSTGOV.gov
1 (800) FED INFO

A public service message from the U.S. General Services Administration.

SCHOOLS (from pg. 1)

in an environment that cultivates creativity and joy in learning.

The Junior Kindergarten program is designed to maintain the hallmarks of the play-based program for young children while offering increased structure, exposure to academic readiness skills, leadership opportunities and preparation for the transition to next schools.

BHNS will hold Open Houses on Oct. 16 and Nov. 8 at 6:45-8 p.m.; guest must pre-register on the school's website.

All applications are due next Feb. 1, except sibling and legacy applications, which are due Nov. 15.

To learn more about BHNS, visit www.bhns.net or call 617-227-0822.

The Boston Children's School has been an integral part of the Boston community for nearly 60 years.

Established in 1965, the Boston Children's School has been providing quality, early childhood education in Pre-School, Kindergarten and Grades 1, 2, and 3 to children from the Greater Boston area and around the world.

Located at Charles River Park, near Massachusetts General Hospital, TD Garden, the Shriners Hospital, and the Massachusetts Eye and Ear Hospital, the Boston Children's School is easy to access. And nestled away from the noise and traffic of the city streets, the Boston Children's School is an oasis of tranquility within the City of Boston.

The facility is fully air-conditioned, heated and brightly lit, allowing for a comfortable learning environment in each classroom. The close student to teacher ratio allows classroom teachers to know each child and their individual learning style.

Since the school's inception, its age-appropriate curriculum has provided children with the knowledge and skills of learning that remain with them for a lifetime. The Boston Children's School also has its own private playground, which allows children secure access to the outdoors throughout the school year. A special Summer-Fun-Program is also available for children in July.

Applications for the academic year are presently being accepted. Registration is available to children between the ages of 2.6 and 7 years old. Information about the flexible time schedules, applications for admission, and tuition are listed on the BCS website at BostonChildrensSchool.Org, or contact the Boston Children's School at 617-367-6239 or

617-BCS-KIDS and ask for Judy Langer, program director.

Charlestown Nursery School, a non-profit nursery school located at 124 Main St. in Charlestown, offers innovative programming for ages 20 months to 5 years old, inspired by the principles of Reggio Emilia, Montessori, and other best practices. Recognized by educators and research institutions from around the globe, CNS has been featured in books, documentaries, and articles.

Each classroom is a "learning lab," with multiple master teachers, learning specialists, fellows, and interns. The emergent curriculum offers a myriad of experiences, including sensory, gross and fine motor early literacy, math skills, dramatic play and music, and visual art through project-based learning. Instruction is personalized through a journey book portfolio-assessment and daily documentation.

Application is available Oct. 1. Early-admissions applications are accepted and reviewed continually from Nov. 15 on a first-come, first-served basis, with acceptance letters typically sent to parents or guardians within 15 days. Visit tours and open houses to see the learning in action.

To learn more about Charlestown Nursery School, visit charlestownnurseryschool.org or call 617-242-5159.

The Spruce Street Nursery School was founded in 1996 on Spruce Street on Beacon Hill and moved to 5 Avery Place in the fall of 2002.

Its enrollment is 49 children on any given day, with 12 teachers, along with three administrators. Besides its morning program, the school also offers Afternoon Enrichment, including activities, such as soccer, swim, dance and cooking. The school also has its own private playground.

"At Spruce, we believe that children proceed along a predictable path at a somewhat unpredictable rate, and it's our job to meet them where they are and help them along their own unique journey," said Christie Guevin, the school's director.

Spruce Street Nursery School will hold an Open House on Saturday, Oct. 21, with faculty, staff, and current parents on hand to discuss the curriculum, and to answer questions from guests. Tuition is due in two installments – the first before July 15 and the second before Dec. 15 – and tuition assistance is available to all qualified applicants.

Visit sprucestreet.org, call 617-482-5252, or email admissions@sprucestreet.org

for more information.

The Advent School is a progressive elementary school in the heart of Boston.

Since 1961, The Advent School's progressive, Reggio Emilia-inspired teaching philosophy instills confidence and curiosity in its students. The school enrolls 173 students from pre-kindergarten through sixth grade from 43 neighborhoods across Boston.

Advent students enjoy a learning environment that balances academic rigor and social-emotional needs. They gain confidence using their knowledge in real-world applications, from using labels on fruit to plot trade routes to designing a more inclusive Massachusetts state flag.

"Advent students are independent investigators who think critically, ask questions, and advocate for themselves and others," said Director of External Affairs Abby Hayhurst. "At Advent, we believe that engaging children as active participants in their learning is an act of social justice."

Students know and care for their Boston community and spend time outside campus engaging with neighbors, business owners, and politicians. Advent graduates attend various next schools, including the Boston Exam Schools, regional public schools, and other independent schools across the Greater Boston area. Call 617-742-0520, ext. 15, or visit adventschool.org for more information.

Nestled in the heart of Boston's historic North End, St. John School has educated children since 1895.

Welcoming PreK-Grade 8 students, the school provides a Catholic education committed to educating children in an atmosphere that fosters a spirit of community, faith, and academic excellence.

Students enjoy a rigorous academic curriculum enriched by integrated STEM programming, Italian language instruction, and the school's own in-house hydroponic garden, Tower Garden Program. This program teaches students about mindfulness, nutrition, food production, and community service, as well as traditional academic subjects. St. John's partners with the Franciscan Food Center at St. Anthony's Shrine to donate the produce from the garden to the hungry.

St. John School is also proud of its partnership with the Lynch Foundation Early Childhood Initiative, an extraordinary project founded by Carolyn and Peter Lynch, for the school's 3- and

4-year-olds. The project supports an environment that nurtures the social and emotional well-being of students in order for robust learning to take place before the start of kindergarten.

Join St. John on Welcome Wednesdays between 9 and 10 a.m. to see all that the school has to offer, or contact Lesley McCormick via email at lmccormick@sjsne.org or by calling 617-227-3143 to schedule a tour.

Boston College High School in Dorchester is a Jesuit, Catholic, college preparatory school serving boys in Grades 7-12, which was founded in 1863.

Prospective students in all grades are required to take entrance exams (i.e. ISSE for seventh- and eighth-graders; and HSPT, SSAT, etc. for high school freshman, sophomores, and juniors).

Applications are due Jan. 16, 2024. The school is holding an Open House on Sunday, Nov. 5, from 10 a.m. to noon for seventh and eighth graders; and from 2 to 4 p.m. for Grades 9-11.

Visit bchigh.edu to register, or call 617-474-5010 for more information.

Malden Catholic, located at 99 Crystal St. in Malden, was founded in 1932 by the Xaverian Brothers.

Over the past four years, Malden Catholic has experienced unprecedented growth. The high school reimaged its future by joining the fundamental strength

and core values of Boys Catholic (1932) with its sister school, Girls Catholic (1908) to create a co-divisional school with single-gender academics during the day and integrated social and extracurricular opportunities after school, which has become the one of the best and fastest growing high schools in New England.

The school's board of trustees designates \$3.5 million in financial-aid assistance to qualifying students, with 65 percent of students receiving some form of tuition assistance last year.

Malden Catholic will hold an Open House for prospective students on Wednesday, Oct. 18, at 5 and 7 p.m.

Visit maldencatholic.org or call 781-322-3098 for more information.

Walnut Hill School for the Arts, an independent boarding school and day school for the arts in Natick, is intended for student artists in Grade 9 through 12, with a post-graduate year also available.

The school offers world-class training in dance; music; theater; visual art; and writing, film-and-media arts, complemented by an innovative college-prep academic curriculum.

The school be holding a Fall Admission Open House for prospective students all day on Saturday, Oct. 28.

For more information, visit walnuthillart.org or call 508-653-4312.


SERVICE DIRECTORY

JOHN J. RECCA
PAINTING
Interior/Exterior
Commercial/Residential
 Fully Insured
 Quality Work
 Reasonable Rates
 Free Estimates
reccapainting@hotmail.com
781-241-2454

DOWNTOWN
Roofing & Masonry
RESTORATION
 Red brick & masonry repairs,
 new roofs, siding, gutters,
 exterior painting
617 888 5359
downtownroofingandmasonry.com

EMERGENCY
ALL BLOOD
TYPES NEEDED.

Give now.

 **American Red Cross**

INDEPENDENT'S

Guide to Schools

IN AND AROUND BOSTON

PRESCHOOLS & KINDERGARTEN

The Advent School
15 Brimmer St.
Boston, MA 02108
617-742-0520 x 15
adventschool.org/
upcoming-events

The Advent School is a progressive, Reggio Emilia-inspired elementary school for children aged four through Sixth Grade. In a diverse academic community founded on the principles of social justice and dedicated to respect and inclusion, Advent students learn to be critical thinkers, confident scholars, and compassionate citizens of the world.

Grades: Age 4 (pre-Kindergarten) - Sixth Grade

Tuition: \$36,050
Hours: 8:10 a.m. - 5 p.m.
Application deadline: January
Financial aid: Need-based aid is available.

Beacon Hill Nursery School
74 Joy Street
Boston, MA 02114
617-227-0822
www.bhns.net

Beacon Hill Nursery School was founded in 1955 and has been a vital part of the downtown community since its inception with a consistent commitment to high quality early childhood education. Our primary mission is to create a nurturing community that instills a lifelong love of learning in its students. We cherish children's innate

curiosity through purposeful play guided by exceptional early childhood educators.

Our school is warm and welcoming, with two onsite play-scapes, a library/community space, eight classrooms and an indoor gym. All of our programs have a strong emphasis on play, hands-on engagement, open-ended exploration and social/emotional development. Enriched by weekly yoga and music classes, our program nurtures and engages children in an environment that cultivates creativity and joy in learning. Our Junior Kindergarten program is designed to maintain the hallmarks of our play-based programs for young children while offering increased structure, exposure to academic readiness skills, leadership opportunities and preparation for the transition to next schools.

Programs: Toddler (2-2.9 years)

- 2 or 3 mornings (8:30am-12pm)
Preschool (2.9-4 years) - 5 mornings (8:30am-12pm)

Junior Kindergarten (4-5 years)
- M-Th (8:45am-2:30pm), F (8:45am-12pm)

Extended Day: Early Drop-off 8:15-8:30am

Extended Day until 3:30 or 5:45pm

Deadlines: Sibling & Legacy Applications - November 15

All other Applications - January 15

Meet us: HillFest (at Charles & Mt. Vernon) - September 24, 12-3pm

Open Houses - October 16 and November 8, 6:45-8pm

Pre-register for our Open Houses online at www.bhns.net/meet-bhns

Financial Aid: Need-based

Belmont Day School
55 Day School Lane
Belmont, MA 02478
671-932-3889

Belmontday.org

Belmont Day School is a community of inspiring, bold, and remarkable learners and leaders. Curricula emphasizes hands-on, interdisciplinary work that grounds the academic experience in the real world, and faculty expertly offer each individual the appropriate level of challenge and support. Students build a strong sense of themselves and embody the school's core values of excellence, honesty, caring, joy, responsibility and respect. Graduates go on to high schools of their choosing, where they are embraced as confident self-advocates and leaders.

Learn more at an Open House - Saturday, October 21, 9:30 to 11:30 a.m.

Grades: Pre-K through grade 8

Register at www.belmontday.org

Boston Children's School
8 Whittier Place
Boston, MA 02114
617-367-6239

BostonChildrensSchool.org

Established in 1965, the Boston Children's School has been bringing the joy of learning to children between the ages of 2.9 and 7 years of age for over 58 years. Located in the historic West End section of Boston, at Charles River Park, the Boston Children's School attracts students from the greater Boston area and children from around the world.

The BCS curriculum is designed to be age appropriate. Children learn and play in small groups, in individual, intimate classroom settings, allowing the classroom teachers to know each child and their individual learning style. In addition to daily classroom activities, the Boston Children's School offers sign language and music as part of its curriculum. All children have daily access to the private on-site playground. The Boston Children's School also offers a "Summer-Fun-Program" to children between the ages of 3 and 8 years old starting in July.

Detailed information about the Boston Children's School, its academic year and summer programs, are available on the BCS website at

(CONTINUED ON NEXT PAGE)

OVER 58 YEARS OF EXCELLENCE
Preschool through Grade 3

THE BOSTON CHILDREN'S SCHOOL

An Independent Coeducational Day School

Eight Whittier Place
617-367-6239
BostonChildrensSchool.Org




JOIN US FOR AN OPEN HOUSE!

Wednesday, October 18 5 PM & 7 PM
Tuesday, November 7 5 PM & 7 PM
Sunday, November 19 10 AM & 12 PM
Tuesday, December 12 5 PM & 7 PM

SIGN UP HERE
Through your
Ravenna account
www.maldencatholic.org





THE ADVENT SCHOOL
Inclusive Community Passion for Learning Culture of Collaboration

Upcoming Previews

ALL SCHOOL*	LOWER SCHOOL	UPPER SCHOOL
*Plus a special breakfast with the Families of Color & FACE affinity groups	ECC - SECOND GRADE	THIRD - SIXTH GRADE
SAT OCT 14 9-11 am	WED OCT 25 8:30-10 am	WED NOV 8 8:30-10 am



www.adventschool.org (617) 742-0572 x15

[@adventschool](https://www.facebook.com/adventschool)

BELIEVE · BELONG · BECOME



1863

BC HIGH

OPEN HOUSE

NOVEMBER 5

REGISTER @ BCHIGH.EDU

GUIDE TO SCHOOLS

www.BostonChildrensSchool.Org. Please feel free to call BCS Director Judy Langer, at 617-367-6239 with any questions that you may have about the school.

Academic Year - September through June. Ages - 2.9 through 7 years old

Hours - 8:45 a.m. through 5 p.m., half day programs are available.

Early arrival at 8:15 a.m. and late stay until 5:30 p.m. also available.

Application Deadline: January 19.

Charlestown Nursery School

124 Main Street
Charlestown, MA
617-242-5169

charlestownnurseryschool.com
admissions@charlestownnurseryschool.org

Charlestown Nursery School (CNS) is an innovative program for children 20 months-5 years old that draws on the best research from Reggio Emilia, Montessori and other thoughtful approaches. Our curriculum is built around a series of explorations that grow out of the children's own interests and integrates individualized development - combining the power of the children's boundless curiosity with an expertly guided investigative approach that immerses the children in the process and joys of real discovery, with the goal of nurturing self-motivated, life-long learners. CNS has been recognized by educators from around the world and has been highlighted in many studies of high-quality early childhood. CNS is known for the teacher researchers and experts.

The city's resources - including parks, museums, libraries, and historic attractions - are considered part of the school's "campus," and our frequent visits foster the child's feeling of being at home in the wider world. In the last years, we have taken even more of our learning outside. See more on Instagram.

Ages: 20 months - 5 years.

Tuition variable by program.

Early admission begins Nov.15 and is first come, first serve. Applications on the website.

Park Street School - Preschool

One Park Street
Boston, MA 02108
617-523-7577

Parkstreetschool.org

Consider the best education for children Toddler - Grade 6 in bright and sunny facilities in Beacon Hill!

While our location is ideal, it's our remarkable students, faculty and families working together, forming close relationships that creates a vibrant and nurturing community where children thrive.

Grounded in Core Knowledge philosophy, children build strong foundations of knowledge in the early years - an approach foundational to developing critical thinking skills necessary for lifelong learning. Learning here is active! Creativity, imagination, and social development are fostered through lessons, learning centers and play. Whether collecting leaves, discovering animals' habitats in Ponds and Meadows, or bicycling in gym, children are "out of the chair" - making connections in and out of the classroom and between subjects. The learning is authentic and sets us apart. As a Christian school, we're committed to guiding students in the formation of character and an understanding of God's love for them. Connecting the mind and the heart - classroom learning and character education - is what makes Park Street School special.

Ages: 2-5 years Tuition: \$12,075-\$25,135; \$2,100-\$8,750 additional for afternoon programs
Financial Assistance: Available for Pre-Kindergarten through Grade 6, with limited availability for Preschool. Hours:8:00 a.m.- noon for morning programs, Creative Afternoons noon-3:00 p.m. for ages 2.9 and up. Two, three, four and five-day programs available.

Application deadline: Jan. 3 for priority for fall programs.

Saint John School
9 Moon Street Boston,
MA 02113
617-227-3143
www.sjsne.com

Nestled in the heart of Boston's historic North End, St. John School has educated children since 1895. Welcoming PreK-Grade 8 students, we provide a Catholic education committed to educating children in an atmosphere that fosters a spirit of community, faith, and academic excellence. Our dedicated teachers and small class sizes ensure that each student's unique progress is celebrated.

Students enjoy a rigorous academic curriculum enriched by integrated STEM programming, Italian language instruction, our own in-house hydroponic garden and much more. We are proud of our partnership with the Lynch Early Childhood Project, an extraordinary project founded by Carolyn and Peter Lynch, for our 3 and 4 year olds.

St. John School offers student drop off starting at 7:30 a.m., after school care until 6 p.m., and an extensive summer adventure camp. (School hours are 8 a.m. to 2:30 p.m.) Boston residents may be eligible for free bus transportation.

Please join us on Welcome Wednesdays between 9 and 10 a.m. to see all that St. John's has to offer or kindly reach out to Lesley McCormick at lmcormick@sjsne.org or call 617-227-3143 to schedule a tour.

Spruce Street Nursery School
5 Avery Place
Boston, MA 02111
(617) 482-5252
sprucest.org

Spruce Street Nursery School offers a joyous early learning experience for children from 2 through 5 years of age. In four open classrooms designed to stimulate creativity and enhance development, dedicated teachers lovingly provide both individual and group instruction and support. Lessons are planned thematically, with ample opportunities for exploration and guided instruction. Physical development is enhanced through daily trips to our on-site playground. Parent involvement is an integral element of the Spruce Street experience,

and the communication between teachers, parents, and children ensures a strong community.

Ages: 2 - 5 years

Tuition: \$13,300 - \$27,500

Hours: Day Program 8:30am-1pm
Acorns 2 - 2.9 years M, W, F or T, TH;

Willows 2.10 - mid-threes 3, 4, and 5 day scheduling options;

Maples late 3s-early fours, 3, 4, and 5 day scheduling options;

Oaks 4 turning five during the school year, 5-day option only.

Early Arrival: 7:30 - 8:30 am, separate fees apply

Enrichment & Extended Day: 1-3:30 pm., separate fees apply

Late Day: 3:30-5:30 pm

Application deadline for the 2024-25 school year is January 16th

Financial aid: Need-based

(CONTINUED ON NEXT PAGE)



explore
WHAT SCHOOL COULD BE...
when we follow the research.

Learn more about our innovative, research-driven program
Ages 20 months to 5 years old
Application & open house information on our website:

WWW.CHARLESTOWNNURSERY.SCHOOL.ORG

Fall Open House Dates:
Sunday, October 22nd, 3-5
Thursday, November 2, 5:30-7

CHARLESTOWN NURSERY SCHOOL

BEACON HILL NURSERY SCHOOL

74 Joy Street, Boston • (617) 227-0822
Registration required: bhns.net/admissions



GUIDE TO SCHOOLS

Admissions

Open House: October 21st, 9 am – 12 pm children are welcome!

ELEMENTARY & MIDDLE

The Advent School
15 Brimmer St.
Boston, MA 02108
617-742-0520 x 15
adventschool.org/upcoming-events

The Advent School is a progressive, Reggio Emilia-inspired elementary school for children aged four through Sixth Grade. In a diverse academic community founded on the principles of social justice and dedicated to respect and inclusion, Advent students learn to be critical thinkers, confident scholars, and compassionate citizens of the world.

Grades: Age 4 (pre-Kindergarten) - Sixth Grade

Tuition: \$36,050

Hours: 8:10 a.m. - 5 p.m.

Application deadline: January

Financial aid: Need-based aid is available.

Belmont Day School
55 Day School Lane
Belmont, MA 02478
671-932-3889
Belmontday.org

Belmont Day School is a community of inspiring, bold, and remarkable learners and leaders. Curricula emphasizes hands-on, interdisciplinary work that grounds the academic experience in the real world, and faculty expertly offer each individual the appropriate level of challenge and support. Students build a strong sense of themselves and embody the school's core values of excellence, honesty, caring, joy, responsibility and respect. Graduates go on to high schools of their choosing, where they are embraced as confident self-advocates and leaders.

Learn more at an Open House: Saturday, October 21, 9:30 to 11:30 a.m.

Grades: Pre-K through grade 8
Register at www.belmontday.org.

Boston Children's School
8 Whittier Place
Boston, MA 02114
617-367-6239

BostonChildrensSchool.org

Established in 1965, the Boston Children's School has been bringing the joy of learning to children between the ages of 2.9 and 7 years of age for over 58 years. Located in the historic West End section of Boston, at Charles River Park, the Boston Children's School attracts students from the greater Boston area and children from around the world.

The BCS curriculum is designed to be age appropriate. Children learn and play in small groups, in individual, intimate classroom settings, allowing the classroom teachers to know each child and their individual learning style. In addition to daily classroom activities, the Boston Children's School offers sign language and music as part of its curriculum. All children have daily access to the private on-site playground. The Boston Children's School also offers a "Summer-Fun-Program" to children between the ages of 3 and 8 years old starting in July.

Detailed information about the Boston Children's School, its academic year and summer programs, are available on the BCS website at www.BostonChildrensSchool.Org. Please feel free to call BCS Director Judy Langer, at 617-367-6239 with any questions that you may

have about the school.

Academic Year - September through June. Ages - 2.9 through 7 years old

Hours - 8:45 a.m. through 5 p.m., half day programs are available.

Early arrival at 8:15 a.m. and late stay until 5:30 p.m. also available.

Application Deadline: January 19.

Park Street School - Elementary
67 Brimmer Street
Boston, MA 02108
617-523-7577

parkstreetschool.org

Consider the best education for children Toddler - Grade 6 in bright and sunny facilities in Beacon Hill! While our location is ideal, it's our remarkable students, faculty and families working together, forming close relationships that creates a vibrant community where children thrive.

Grounded in Core Knowledge philosophy, children build strong foundations of knowledge in the early years - an approach foundational to developing critical thinking skills necessary for lifelong learning. Learning here is active! Whether it's collecting field research in tidal pools, celebrating medieval festivals or bringing Shakespeare to life on stage, children are "out of the chair" - making connections in and out of the

classroom and between subjects. The learning is authentic and sets us apart. As a Christian school, we're committed to guiding students in the formation of character and an understanding of God's love for them. Connecting the mind and the heart - classroom learning and character education - is what makes Park Street School special.

Grades: Kindergarten-Grade 6
Tuition: \$33,915 - \$36,725; \$1,500-\$6,000 additional for afternoon programs. Financial Assistance: Available for Pre-Kindergarten through Grade 6, with limited availability for Preschool.

St. John School
9 Moon Street Boston,
MA 02113
617-227-3143
www.sjsne.com

Nestled in the heart of Boston's historic North End, St. John School has educated children since 1895. Welcoming PreK-Grade 8 students, we provide a Catholic education committed to educating children in an atmosphere that fosters a spirit of community, faith, and academic excellence. Our dedicated teachers and small class sizes ensure that each student's unique progress is celebrated.

Students enjoy a rigorous academic curriculum enriched by integrated STEM programming, Italian language instruction, our own

(CONTINUED ON NEXT PAGE)



Joyous Early Learning for Children Ages 2 - 5

Spruce Street Nursery School

5 Avery Place
Boston, MA 02111
(617) 482-5252
www.sprucestreet.org

for more information or to register to attend, scan below (drop-ins welcome too!)



ADMISSIONS OPEN HOUSE

Saturday, October 21st, 9:00 am – 12:00 pm
Tour the school with current parents, meet classroom teachers, school administrators and play in our playground. Children are welcome!

The application deadline is January 16, 2024 -
Financial assistance is available



St. John School

128 years of value-centered learning
in the heart of Boston's North End.
PreK-Grade 8



COME AND VISIT US!

9 Moon Street | Boston MA 02113 | 617-227-3143

www.sjsne.com

Contact Lesley McCormick, lmccormick@sjsne.com to schedule a tour

GUIDE TO SCHOOLS

in-house hydroponic garden and much more. We are proud of our partnership with the Lynch Early Childhood Project, an extraordinary project founded by Carolyn and Peter Lynch, for our 3 and 4 year olds.

St. John School offers student drop off starting at 7:30 a.m., after school care until 6 p.m., and an extensive summer adventure camp. (School hours are 8 a.m. to 2:30 p.m.) Boston residents may be eligible for free bus transportation.

Please join us on Welcome Wednesdays between 9 and 10 a.m. to see all that St. John's has to offer or kindly reach out to Lesley McCormick at lmccormick@sjnsne.org or call 617-227-3143 to schedule a tour.

HIGH SCHOOLS

Boston College High School

150 Morrissey Boulevard

Boston, MA 02125

617.474.5057

enrollment@bchigh.edu

Climate change. AI. Racial and economic inequality. Today's most pressing issues will shape the lives of countless future generations. But so too will young people have the chance to shape solutions to these problems and steer the course of history.

At Boston College High School, our young men are taught to make a difference from their very first day. BC High is a place where leadership, innovation, faith, interculturality, and justice aren't just extraneous parts of the experience - they are thoughtfully woven into the curriculum and everyday life through our Centers for Human Excellence.

Our alumni have changed the world as military and spiritual leaders, politicians and scientists, educators and captains of industry. And while we empower today's students to strive for that same success, we are committed to providing our boys with the care and support that helps them grow into loving men determined to make the world a better place. Our innovative House System sets an unparalleled standard of care that enables students to experience all the resources of a large private school, while being nurtured and mentored in a deeply personal way.

We know our young men inside and out - and we hope you'll get to know us too. Join us and register for Open House on November 5 at bchigh.edu to learn more about our 160-year history of educating

young men grades 7-12 in the Jesuit, Catholic tradition and why BC High might be the perfect fit for your family.

Malden Catholic High School

99 Crystal St,
Malden, MA 02148

maldencatholic.org

Since 1932, Malden Catholic has shaped emerging leaders in our community, claiming a Nobel Laureate, a Senator, two ambassadors and countless community and business heads among its alumni. Annually, graduates attend some of the nation's most renowned universities including Harvard, Princeton, Dartmouth, University of Chicago, Georgetown, Cornell, Brown, Tufts University, Carnegie Mellon, Duke, Notre Dame, Northeastern University, Boston College and College of the Holy Cross, just to name a few. Foundational to student success is Malden Catholic's codivisional model which offers the best of both worlds, single-gender academics during the day and integrated social and extracurricular opportunities after school. Malden Catholic is known in the community for its rigorous academics, SFX Scholars Program and award-winning STEM program. Malden Catholic curricula is designed to improve individual growth mindset, leadership principles and success outcomes along with integrating the Xaverian val-

ues of trust, humility, compassion, simplicity and zeal. Visit our website to sign up for an Open House or email admissions@maldencatholic.org.

The Newman School

247 Marlborough St,
Boston, MA 02116

671-247-4530

newmanboston.org

At Newman, we live our motto, "Heart Speaks to Heart." Relationships are the foundation of students' intellectual exploration and personal growth. Our International Baccalaureate curriculum cultivates students' abilities to think critically, ask questions, learn across disciplines, and develop research skills to thrive in college and become global contributors. Founded in 1945, located in the heart of Boston's Back Bay neighborhood, we serve students from grades 7-12 (and postgraduate) from Boston, 55 towns, and 40 countries. We offer the only comprehensive boarding program in the city. Our students participate in activities that embrace the "city as our campus." Students develop a global and community mindedness that enriches their ability to make an impact in the world. The warm and caring environment and small class sizes make Newman a place where students are seen and valued. Register for a "coffee talk" in your neighborhood to learn more about Newman at newmanboston.org.

org/coffeetalks.

Virtual Open Houses

All Grades: October 11 @ 6pm

Middle School: October 18 @ 6pm

Upper School: October 25 @ 6pm.

Walnut Hill School for the Arts

12 Highland St,

Natick, MA 01760

walnuthillarts.org

Founded in 1893, Walnut Hill School for the Arts is located in Natick, Massachusetts, within the Boston metropolitan area. As one of the premier boarding and day schools in the United States, the School provides an immersive and intensive learning environment for

talented arts students in Grades 9-12 and in post-graduate studies. With areas of focus in Music, Dance, Theater, Visual Art, and Writing, Film & Media Arts, combined with a comprehensive academic curriculum, students from around the world are able to hone their crafts and engage in transformative experiences with professional artists and instructors from Boston Ballet, the New England Conservatory of Music, and other major arts institutions. Walnut Hill alumni include many internationally recognized actors of stage and screen, Pulitzer Prize-winning writers, and musicians and dancers at a number of the world's top performing arts organizations and ensembles. Visit walnuthillarts.org for more information.



Inspire. Discover. Become.

TODDLER - GRADE 6 | PARKSTREETSCHOOL.ORG

OPEN HOUSES

EVENING

October 23
6:00-8:00 PM

MORNING

November 15
9:00-11:00 AM

December 5
9:00-11:00 AM



PARK STREET
SCHOOL

EST. 1893

WALNUT HILL
SCHOOL FOR THE ARTS

Boarding and Day School
Grades 9-12

MUSIC. DANCE.
VISUAL ART. THEATER.
WRITING, FILM & MEDIA.
ACADEMICS.

12 Highland St
Natick, MA 01760
walnuthillarts.org

LEARN MORE



REGISTER



GUIDE TO SCHOOLS

THE BOSTON CHILDREN'S SCHOOL



Each Spring, through the courtesy of the Tufts Dental School, dentists and dental students meet with the children of The Boston Children's School, a private, coeducational school, to talk about the proper care of teeth. Information about eating good food for healthy teeth, the proper hygiene for keeping teeth and gums healthy are some of the topics discussed. The interactive discussions involve the use of puppets to demonstrate the proper way to brush your teeth. All children received a toothbrush and tooth paste compliments of the visiting dental professionals. This annual event is part of the Health and Wellness curriculum at The Boston Children's School.

BEACON HILL NURSERY SCHOOL



Students enjoying their time at the Beacon Hill Nursery School.

WALNUT HILL SCHOOL FOR THE ARTS

The Walnut Hill School for the Arts provides an immersive and intensive learning environment for talented arts students in Grades 9-12



ST. JOHN'S SCHOOL



Welcome Back- St. John's students (above and below) enjoyed popsicles to celebrate the first day of the new school year. Principal Cassidy, faculty, students, and parents are happy to be back! ST John School is a pre-K to 8 school in The North End of Boston, To schedule a tour kindly email Lesley McCormick at lmccormick@sjcne.org or call 617-227-3143.



CHARLESTOWN NURSERY SCHOOL



Teachers and students working together at Charlestown Nursery School.

**TO PLACE YOUR
AD CALL
781-485-0588**



TOUCH A TRUCK EVENT RE-SCHEDULED FOR SEPTEMBER 23



Evander Ward is seemingly scooped up in the bucket of the J Derenzo Co. excavator during last year's event.

The Suffolk Downs 3rd Annual Touch a Truck event has been re-scheduled for Saturday, September 23.

Touch a Truck will provide kids and kids at heart an up-close view of tractors, trucks, diggers, police cars, fire engines and more! Attendees will be able to sit in the seats, honk the horns, and take their picture on the front end. There will also be kids activities, face painting, games, bubbles, food trucks, and craft beer by Night Shift Brewery in the Pad-dock!



Niall and Daniel Horgan check out a John Deere tractor during last year's Touch a Truck event.

TLCC to operate tenant space on Lovejoy Wharf

Special to the Regional Review

The Boston Planning & Development Agency (BPDA) have announced the selection of Toussaint Louverture Cultural Center (TLCC) to operate the program space located at 131 Beverly Street on Lovejoy Wharf. The BPDA sought respondents that were qualified to operate civic/cultural space, which is designed as a visitor's center-style facility. The TLCC responded to the Request for Letters of Interest (RFI) that was originally released by the BPDA last winter, with their proposal to use the space for Haitian-based programs, partners, and communities.

"We can't wait for TLCC to breathe new life into this space and be a new focal point for the area," said Chief of Planning Arthur Jamison. "I want to thank our partners in the Mayor's Office of Arts and Culture for their collaboration on finding the right tenant for this space, and I look forward to seeing the end result."

This organization will serve first and foremost as a visitor's center in the West End neighborhood. They will also offer author talks, adult and youth-focused classes on Haitian art and painting, gallery and display exhibits, a cultural library focused on Haitian print and digital materials, books, resources, and music, as well as a café, and additional events such as dance classes, language classes, and youth programming. The establishment of a central cultural hub will allow the Haitian culture and people of Boston to flourish. Programs and events will celebrate Haitian culture and have an educational component that invites

multi-generational and cultural communities to learn and celebrate Haitian culture.

"We are proud to establish a cultural center in the West End that will not only showcase our heritage and our achievements, but also create a visually striking and vibrant space to foster a sense of community and cultural diversity that is representative of Boston's rich history," said Marvin Dee Mathelier, chair of the Toussaint Louverture Cultural Center Task Force.

Representatives from the Mayor's Office of Arts and Culture (MOAC) partnered with the BPDA in the issuance of the RFI, the evaluation of the proposals received, and the public meeting and comment process. MOAC remains active in the considerations for future spaces like these that are made available through Chapter 91 Facilities of Public Accommodation. MOAC is coordinating with the BPDA and a consultant on the Waterfront Civic/Cultural Space Planning Study which will examine the delivery conditions of spaces like this as well as the public tenancing process to ensure that all potential users have equal access to these opportunities.

"We are so pleased that TLCC will be celebrating the rich and vibrant culture of the Haitian diaspora in this new space," said Kara Elliott-Ortega, Chief of Arts & Culture. "Approaching cultural space tenancing with intention allows us to create opportunities for local creative and cultural communities to gather, create, and thrive in Boston."

"I am thrilled that, after years of dedicated organizing and advocacy, the Toussaint Louverture

Cultural Center (TLCC) has finally found a home in the thriving West End, at Lovejoy Wharf," said City Councilor Ruthzee Louijeane. "This is a fantastic opportunity not only to support Boston's Haitian community but to ensure that the West End continues to embrace the rich diversity we see across the city. I am excited about the potential for collaboration between Lovejoy and the TLCC and look forward to continuing to support this project in the years ahead."

"MassDEP's Chapter 91 law promotes public access to coastlines and waterfronts so all can enjoy these public spaces," said Commissioner Bonnie Heiple of the Massachusetts Department of Environmental Protection. "We are delighted to partner with the City of Boston and the Toussaint Louverture Cultural Center to help further activate the Commonwealth Tidelands at the Lovejoy Wharf with the addition of a cultural, civic and educational center that will attract residents and visitors alike."

"Related Beal is thrilled to welcome the Toussaint Louverture Cultural Center of Massachusetts to Lovejoy Wharf. We are grateful to the Boston Planning & Development Agency and Mayor's Office of Arts and Culture for working with us to provide a new home that will honor Haitian heritage," said Aisha Miller, vice president of community & corporate engagement at Related Beal. "The opening of this civic and cultural space will mark a key milestone in Lovejoy Wharf's revitalization, and we look forward to supporting this community hub along Boston's historic waterfront."

INVITATION FOR PUBLIC COMMENT

Suffolk University will undergo a comprehensive evaluation visit on October 29, 2023, by a team representing the New England Commission of Higher Education (formerly the Commission on Institutions of Higher Education of the New England Association of Schools and Colleges, NEASC).

In anticipation of this visit, the public is invited to submit comments addressing substantive matters related to the quality of the institution. The Commission cannot settle disputes between individuals and institutions, where those involve faculty, students, administrators, or members of other groups. Comments will not be treated as confidential and must include the name, address, and telephone number of the person providing the comments. Public Comments must be received by November 1, 2023. The Commission cannot guarantee that comments received after that date will be considered.

Comments can be sent via email to info@neche.org or to:

Public Comment on Suffolk University
New England Commission of Higher Education
301 Edgewater Place, Suite 210
Wakefield, MA 01880

For additional information, scan the QR code



OBITUARIES

Joseph "Joey Love" D'Elia

A selfless man who always put others before himself

Family and friends are invited to attend a Visitation in St. Leonard of Port Maurice Church, 320 Hanover St., Boston's North End on Saturday, September 23, beginning at 11 a.m. for Joseph A. "Joey Love" D'Elia who passed away unexpectedly on September 17th at 53 years old. A Funeral Mass will be celebrated at 12 (Noon). Interment will be held privately at a later date.

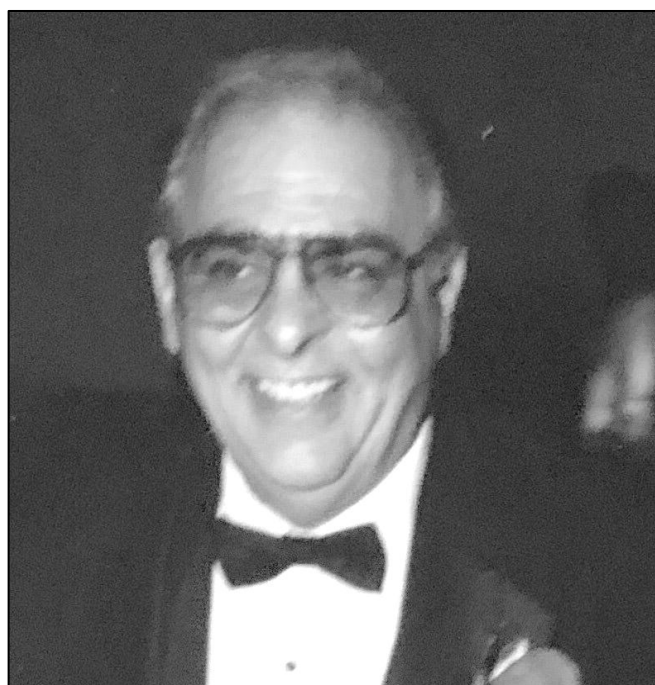
The loving son of the late Ralph and Aurora (Capozzi) D'Elia, he was the cherished brother of Darlene D'Elia of Boston's North End, Sharon Verrocchi and her companion, Joe and Ralph D'Elia and his wife, Tracy, all of Revere, Laurie D'Elia and her lifetime partner, Dominic of Boston's North End and Michael D'Elia and his partner, Taylor of Boston's North End; the adored uncle of Daniel D'Elia, Ralph, Aurora and Nicholas Verrocchi, Taylor and Jordan D'Elia, Elena D'Elia, David Carroll and Aurora Faye



Keatley. He is also lovingly survived by his stepmother, Angela Guarino-D'Elia.

Joey loved spending time with his family. His nieces and nephews were everything to him and he wanted nothing more than for all of them to be successful. He was extremely proud of them. Joey was funny and had the best one-liners you could hear. He was a selfless man who always put others before himself.

Happy 87th Birthday, 'Joe D.!



In Loving Memory

Joseph 'Joe D' DiFronzo

September 20, 1936 - June 22, 2022

~It is so hard to live without you.~

Love,
Your Loving Family

CONSTRUCTION UPDATE

The Construction Look-Ahead for the North Washington ST. Bridge through September 30 is as follows:

Scheduled Work

- Installation of concrete bridge barriers and sidewalks
- Off-bridge utility work and cutover to permanent bridge
- Off-bridge approach barrier and curb work

Work Hours

- Most work will be done during weekday daytime hours (6:00 a.m. – 4:00 p.m.)

Contraflow Pilot

- The MassDOT-implemented contraflow pilot will continue to be in effect during evening peak traffic (3:00 p.m. to 7:00 p.m.), Monday through Friday.

• Police details, lane markings, temporary barriers, traffic cones, signage, and other tools will be used to control traffic during set up and operation of the contraflow.

Travel Tips

For everyone using the temporary bridge, please help share the space: walk to the right, walk bikes, and be mindful of people coming from both directions, if walking in a large group.

Drivers should take care to pay attention to all signage and move carefully through the work zone. Police details, lane markings, temporary barriers, traffic cones, signage, and other tools will be used to control traffic and create safe work zones.

The Tudor Wharf Walkway (under the bridge next to the water in Paul Revere Park) will be intermittently closed for safety during construction operations, with access provided via the Water Street underpass. The Boston Harborwalk under the bridge and eastern/harborside bridge sidewalk remain closed until rebuilt.

The contractor is coordinating with the TD Garden and local police to provide awareness and

manage traffic impacts during events. For your awareness, the following TD Garden events are scheduled during this look-ahead period:

- BREAK'N THE ICE: Sept. 23 at 12 p.m.
- BRUINS PRESEASON: Sept. 24 at 5 p.m. and Sept. 29 at 7 p.m.
- CONCERTS: Sept. 25 at 8:30 p.m., Sept. 27 at 7:30 p.m., and 9/30 at 8 p.m.

How can I find more information?

Stay up-to-date and informed by following the @MassDOT twitter account and Mass 511 for real-time updates, visiting the project website, or emailing us with any questions.

You can also sign up to receive project updates via email by clicking this link.

Project website: [Mass.gov/north-washington-street-bridge-replacement](https://mass.gov/north-washington-street-bridge-replacement).

Project email: NorthWashingtonStreet@dot.state.ma.us.

Schools urged to register for the BCYF Spelling Bee

Boston Centers for Youth & Families (BCYF) is proud to announce the opportunity for Boston students and schools to participate in the Scripps National Spelling Bee program through the 16th Annual BCYF Spelling Bee.

Boston students of public, charter, pilot, and parochial schools as well as home-schooled students are eligible to participate in BCYF's Bee this spring only after they have won a Bee held at a Boston school. In addition to improving students' spelling skills and broadening their vocabulary, Spelling Bee participation provides valuable experience in developing self-confidence—a necessary skill for success in public speaking and performing arts.

How to get involved:

- Register your Boston school with Scripps National Spelling Bee online by December 31, 2023 at www.spellingbee.com/enrollment. This will also serve as your registration for BCYF's Bee. (Save money by opting into Early Enrollment by October 31, 2023).
- Pay the enrollment fee of

\$180 to Scripps National Spelling Bee.

- Hold a school spelling bee on or before Friday, February 23, 2024.

• Submit winner's name and bio form to BCYF by 5:00 p.m. on Friday, February 23, 2024.

• Cheer on your school's representative speller at the 16th Annual BCYF Spelling Bee on Saturday, March 16, 2024!

Benefits of participation:

• Exclusive online access to the teachers-only section of spellingbee.com.

• Official pronouncer guides for use in conducting classroom and school bees.

• Access to The Great Words, Great Works reading list with all source books, organized by reading level.

• Supplemental vocabulary materials for classroom and school levels.

• Customizable certificates for your participants and school champion.

• A one year subscription to Britannica Online for kids to

award to a participant in your school bee program (2 subscriptions if you enroll before September 30).

• Words of the Champions, a 4,000 word student study guide for school champions, and a 450 word school spelling bee study list.

The champion of the 16th Annual BCYF Spelling Bee will win a trip to Washington, D.C. to compete in the 2024 Scripps National Spelling Bee. All finalists will receive a trophy and the second and third place finishers will win an Amazon Fire table, and Amazon gift card.

In 2008, BCYF started a new tradition for Boston by hosting the first citywide Spelling Bee in over 70 years. Over the next fifteen years, BCYF, with the support of the Boston Bruins Foundation, has continued the tradition of the BCYF Spelling Bee. Each year, family members, friends, and teachers proudly cheer on the spellers at the Citywide Spelling Bee in March.

SEND US YOUR NEWS

The Times encourages residents to submit engagement, wedding and birth announcements, news releases, business and education briefs, sports stories and photos for publication. Items should be forwarded to our offices at 385 Broadway, Revere, MA 02151. We also encourage readers to e-mail news releases and photos to deb@reverejournal.com.

THE FRIENDS OF THE NORTH END CELEBRATE ANOTHER REUNION

By Victor Passacantilli

On Saturday, September 16, the Friends of the North End celebrated its 51st annual reunion. 130 boyhood friends met to dine and reminisce about growing up in their cherished North End. The Capri Room at Spinelli's in Peabody was filled with fun, laughter, hugs and love for 5 hours.

A special thank you to Sam Viscione and Arthur "Sonny" Lauretano for making this 51st reunion such a success.

And thanks to Vito Aluia for always being first in line to volunteer to help.

And Thank you to John Spinale for donating his time and music to our reunion.

Louie Bono enjoyed it so much that he pranced around the hall looking for someone to dance with.

Dom Capossela addressed the group and launched the sale of his book, "Do You Believe In Magic, an Anthology of North End Stories."

All the profits from the sale of the book will go to worthy North End organizations and charities.

The book contains many stories of what it was like to grow up in

the North End during the '50s and '60s. Over 30 North Enders have contributed stories that are funny, heartwarming and reminiscent.

North Enders and another large audience of readers are already writing wonderful reviews about the book. It has reached Number One status on Amazon in its category in such a short time!

Anthony "Tony" Cortese spoke to the group of a project that became a passion for Michael Annunziata. Michael was determined to honor Italian immigration to this country and in particular to the North End. He laid all the essential groundwork for a sculpture to be erected in the Peace Garden of Saint Leonard's Church just before he died in February. Tony Cortese has taken the reins with his unique set of skills and has put in an incredible amount of time, energy and know-how to make Mike's quest come to life. A fundraising drive is underway. Those who want to donate to the Noble Journey Sculpture can visit the North End Historical Society's website to do so, northendhs@gmail.com.

This year the Friends of the North End welcomed its long-distance attendees:

Peter Masucci from Maine



Victor Passacantilli.

John Rosato from Rhode Island Paul Puopolo, Richie Pantalieri and Bobby Chiota came all the way from California!

Richie Sinopoli and Kenny Casale were awarded the Woz Award for correctly answering the Coppola Challenge trivia question: What was the name of the grocery store at 364 Hanover Street? It was Di Bicarri's. The question was submitted by Vito Aluia.

Everyone who attended this year's reunion is joyfully awaiting the next one. Spinelli's has already been booked for Saturday, September 21, 2024.

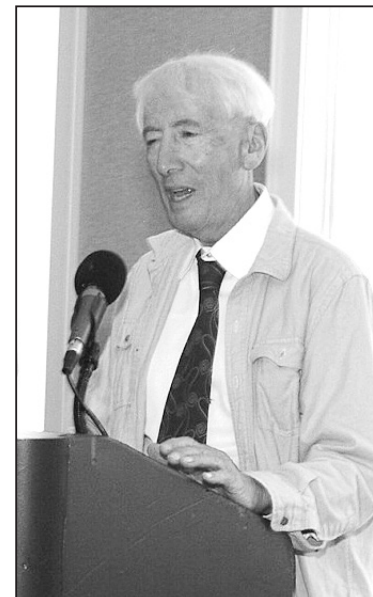
Long Live Our North End.



Victor Passacantilli, Sammy Viscione, Stephen Lyle Eori, and Charles Chubby Pesaturo.



Anthony Cortese.



Dom Capossela.



Joe Bono, Paul Puopolo, John Rosato, Victor Passacantilli, Richie Pantalieri, Bob Chiota, and Peter Masucci.



Victor Passacantilli, Sammy Viscione, Sonny Lauretano, and Vito Aluia.

Changes to marketing and leasing processes for IDP housing units

Special to the Regional Review

The City of Boston announced a series of changes aimed at simplifying and adding transparency to the process of marketing and leasing up income-restricted housing produced through the Inclusionary Development Policy (IDP) program.

This spring, officials initiated a comprehensive review of the marketing and lease up process for income-restricted units. Our team conducted one-on-one interviews and focus group discussions with housing seekers, developers, and

marketing agents. We also sent out a survey to over 5,000 applicants who participated in recent lotteries for IDP housing units. Through these efforts, we gained valuable insights into the experiences of our stakeholders and identified areas where we could make significant improvements.

Four significant changes were implemented for the marketing and lease up income restricted units through the City's IDP program:

1. Simplified Marketing and Tenant Selection Plan: The City is reducing its current 68-page marketing and tenant selection plan

to a concise five-page document. We will accompany the new plan with a handbook that will provide in-depth guidance about the marketing and lease up process. The handbook will be available online and will be regularly updated. You can access the new marketing and tenant selection plan template and handbook by visiting the City of Boston's Affirmative Fair Housing Marketing website.

2. Improved Outreach Methods: We are changing the requirements associated with advertising and outreach. Developers will no longer be required to advertise their IDP income restricted units in

local newspapers or hold in-person application distribution sessions. Instead, the City of Boston will spearhead new coordinated advertising for all active projects in both print newspapers and digital mediums. The City will also host hybrid information and application distribution sessions at sites across the city.

3. Streamlined Application Process: The City is removing request forms for residents interested in renting or buying IDP units, eliminating unnecessary paperwork and simplifying the process.

4. Increased Transparency:

The City will begin posting the results of our lotteries and subsequent constituent outreach online. Housing seekers will be able to see their exact position in line for a specific housing opportunity and understand the reasons behind their progression or non-progression in the process.

These four steps represent significant progress towards streamlining and simplifying the process, we are committed to further enhancements. Over the next several months, officials will continue to make changes to improve the experience for both housing seekers and developers.

Passengers urged to plan ahead as detours expected at Logan

Special to the Regional Review

Due to ongoing roadway work that will impact passengers using Terminals B, C and E roadways, the Massachusetts Port Authority (Massport) is urging departing passengers to plan for extra time if driving to the airport and/or utilize the various transit modes to get to and from Logan. Terminals B and C are Boston Logan's busiest terminals - B serves American, United, Air Canada, Spirit, Southwest, Boutique and Alaska, while C serves JetBlue, Aer Lingus, Cape Air and TAP Air Portugal. Ongoing roadway construction will revamp the current terminal roadway system to eliminate backups, enhance the passenger pickup and drop off process, and get passengers to and from the terminals faster, improving the overall customer experience at Boston Logan.

During the 11-day period through September 25 (weather permitting), the roadway construction will require detours. Terminals C and E Departures traffic will be detoured to alternative roadways.

Terminal C Departures level traffic will be re-routed to the Arrivals level roadway to the Terminal C Ride App area in Central Parking. Terminal E Departures level traffic will be detoured through Terminal B Departures. For one day on September 16, Terminal C and E Arrivals traffic will be detoured through Terminal B Arrivals. Additional signage is being installed and State Police and Massport Ground Transportation staff will be on site to assist drivers.

The roadway construction is replacing the aging roadway infrastructure along both levels between the terminals. When work is completed, Terminals C and E Departures traffic will be able to use the newly constructed roadway and will no longer have to merge with vehicles exiting Terminal B. The construction will also create more curb space at Terminal C - and reduce congestion on Boston Logan's roadways - by improving traffic flow and increasing traffic safety. This project is set to be completed this November.

We strongly urge passengers to take advantage of the various transit modes to and from Logan, such as MBTA's Silver Line (FREE from Logan), Blue Line and water ferry, Logan Express, and private bus lines. Massport operates four suburban Logan Express services including Framingham, Braintree, Woburn and most recently Peabody at the North Shore Mall.

For those picking up loved ones at Logan, we are encouraging the use of Boston Logan's two Cell Phone Lots, located on Service Road and in the area adjacent to the Rental Car Center, to prevent congestion at the terminal curbs. Drivers should follow the signs to either of the Cell Phone Lots, and park until the person or party being picked up is ready at the terminal curb. Each location has approximately 100 parking spots.

Additional customer benefits from this initiative include:

- Less queuing on roadways;
- Reduction of vehicle emissions associated with traffic delays;
- Increased infrastructure resiliency;
- Improved lighting and way-finding signage.

For more information on the various ways to get to and from Boston Logan, please go to www.massport.com/logan-airport/to-from-logan/.

LEGAL NOTICES

LEGAL NOTICE
COMMONWEALTH OF MASSACHUSETTS
THE TRIAL COURT
PROBATE AND FAMILY COURT
CITATION ON PETITION FOR ALLOWANCE OF ACCOUNT

Suffolk Probate And Family Court
24 New Chardon St.
Boston, MA 02114
(617)788-8300
Docket No. SU155123
In the matter of:

Lizzie S. Stone
Date of Death: 01/01/1900
To all interested Persons:
A Petition has been filed by Don J.J. Cordell of Boston, MA requesting allowance of the 59th through 65th account(s) as Trustee and any other relief as requested in the Petition. You have the right to obtain a copy of the Petition from the Petitioner or at the Court. You have a right to object to this proceeding. To do so, you or your attorney must file a written appearance and objection at this Court before 10:00 a

.m. on 10/10/2023.
This is NOT a hearing date, but a deadline by which you must file a written appearance and objection if you object to this proceeding. If you fail to file a timely written appearance and objection followed by an Affidavit of Objections within thirty (30) days of the return date, action may be taken without further notice to you. WITNESS, Hon. Brian J. Dunn, First Justice of this Court.
Date: September 06, 2023
Vincent Procopio
Register of Probate

9/21/23
RR

Mammograms Save Lives.

All women over 40 should have a mammogram once a year. Breast cancer found early offers the best chance to be cured. Free or low cost mammograms are available. For more information and answers to any of your cancer questions, contact us any time, day or night.

www.cancer.org
1.800.ACS.2345



Extend your Business's reach with Online Advertising!

Clients and Customers are just a click away!

\$300⁰⁰ per month per site



THE INDEPENDENT NEWSPAPERS

- REVEREJOURNAL.COM • WINTHROPTRANSCRIPT.COM
- LYNNJOURNAL.COM • EVERETTINDEPENDENT.COM
- EASTIETIMES.COM • CHELSEARECORD.COM
- CHARLESTOWNBRIDGE.COM • BEACONHILLTIMES.COM
- NORTHENDREGIONALREVIEW.COM • THEBOSTONSUN.COM
- JAMAICAPLAINGAZETTE.COM • MISSIONHILLGAZETTE.COM

Combo Rates available!
Buy any 3 sites, get 4th FREE

Call 781-485-0588 to get started!

AD SIZE

in pixels

W: 160px

H: 600px

please send in "png" format